

# KinderMourn

## 19TH ANNUAL

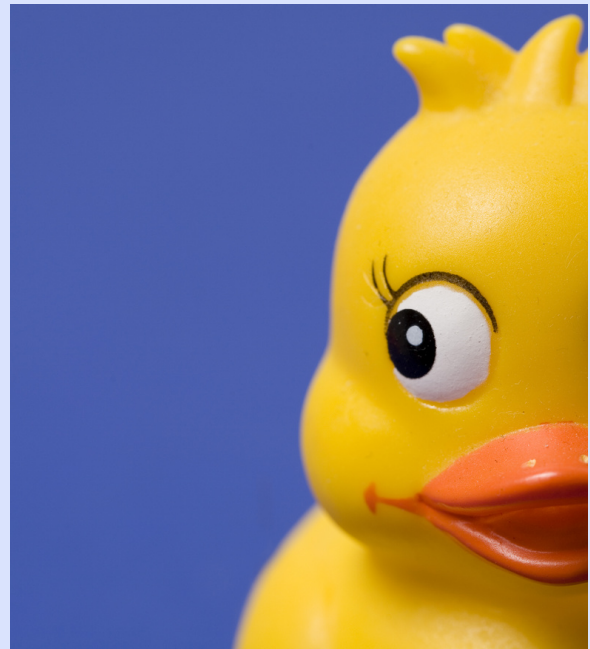
### hope floats event guide



**THANK YOU FOR JOINING US AT  
THE 19TH ANNUAL HOPE FLOATS  
DUCK RACE!**

**THE EVENT KICKS OFF AT 2 PM ON  
SUNDAY, APRIL 30TH, AT THE  
WHITWATER CENTER. PLEASE  
FIND KEY DETAILS BELOW.**

- **THE WHITEWATER CENTER IS  
LOCATED AT 5000 WHITEWATER  
CENTER PARKWAY, CHARLOTTE,  
NC 28214**
- **EVENT IS FROM 2 PM - 5:30 PM,  
AND WE RECOMMEND YOU TO  
ARRIVE NO LATER THAN 2:45  
PM. ALLOW AT LEAST 15 MINS  
FOR PARKING!**
- **WHEN YOU ARRIVE, CHECK IN  
AT OUR VID TENT (VERY  
IMPORTANT DUCK) IF YOU ARE  
A TEAM CAPTAIN. SEE MAP ON  
PAGE 5 FOR DETAILS.**
- **OUR SPONSOR DUCK RACE,  
WHICH IS A FUN WARM-UP FOR  
THE BIG EVENT, KICKS OFF AT  
3:15 PM. WE RECOGNIZE ALL  
SPONSORS AT THIS TIME AND  
DROP EXTRA-LARGE DUCKS  
INTO THE RAPIDS TO RACE!**



- **MAIN-EVENT DUCKS DROP AT  
3:30 PM. WE ANTICIPATE  
DROPPING 40,000 - 45,000  
DUCKS!**
- **THE EVENT IS FREE TO ATTEND.  
WWC CHARGES \$6 FOR  
PARKING.**
- **QUESTIONS? CONTACT  
KATY@KINDERMOURN.ORG OR  
TEXT 704-962-7718.**





# EVENT SCHEDULE

**SUNDAY, APRIL 30TH**

**WHITEWATER CENTER**

**5000 WHITEWATER PKWY**

**CHARLOTTE, NC 29214**

**\*PARKING IS \$6**

<b>2:00 PM</b>	<b>EVENT STARTS</b>
<b>2:00 - 3:30 PM</b>	<b>VID (VERY IMPORTANT DUCK) TENT OPEN</b>
<b>2:15 PM</b>	<b>DUCK DEPOT OPENS (CREDIT ONLY, NO CASH)</b>
<b>3:15 PM</b>	<b>SPONSOR DUCK RACE</b>
<b>3:15 PM</b>	<b>KID ZONE GAMES CONCLUDE</b>
	<b>(FACE PAINTING AND GLITTER HAIR REMAIN OPEN UNTIL 5 PM)</b>
<b>3:30 PM</b>	<b>MAIN EVENT DUCK RACE</b>
<b>5:30 PM</b>	<b>EVENT ENDS</b>

## WHITEWATER CENTER HOURS

### HOURS ON SUNDAY, APRIL 30

<b>Pass Activities</b>	<b>10:00 am – 7:00 pm</b>
<b>Trail Center</b>	<b>11:30 am – 8:00 pm (Food and Beverage)</b>
<b>Water Release</b>	<b>11:30 am – 4:00 pm</b>
<b>Pump House</b>	<b>12:00 pm – 7:30 pm (Biergarten)</b>
<b>River's Edge</b>	<b>11:00 am – 8:00 pm</b>
<b>The Market</b>	<b>10:00 am – 5:00 pm</b>
<b>Outfitters</b>	<b>9:00 am – 8:00 pm</b>





# EVENT DETAILS

---

## WHAT TO DO WHEN YOU ARRIVE

**ALLOW AT LEAST 15 MINUTES FOR PARKING. YOU DO NOT WANT TO MISS THE BIG DUCK DROP!**

**ONCE YOU PARK, HERE ARE NEXT STEPS TO CONSIDER:**

- IF YOU'RE ARRIVING EARLY TO ENJOY WHAT THE WHITEWATER CENTER HAS TO OFFER, HEAD TO THE PASS CENTER IN FRONT OF THE OUTFITTERS TO PURCHASE RAFTING, ROPES COURSE, OR OTHER ACTIVITY PASSES
- WHEN YOU'RE READY TO GET SETTLED, GRAB A SPOT ALONG THE RIVERFRONT BETWEEN THE RIVER JAM STAGE AND THE RIVER COURSE - **CHECK OUT THE MAP ON PAGE 5 FOR DETAILS**
- **IF YOU ARE A TEAM CAPTAIN**, CHECK IN AT THE VID (VERY IMPORTANT DUCK) TENT BETWEEN 2:00 - 3:15 PM FOR SOME TEAM CAPTAIN-ONLY ITEMS AND SIGNS

**HERE ARE SOME ITEMS WE RECOMMEND BRINGING WITH YOU ON EVENT DAY:**

CAMPING/CAPTAINS CHAIRS

BACKBAG OR BAG FOR GOODIES

POP-UP TENT OR SUN SHADE\*

RAIN GEAR/UMBRELLA

SUNBLOCK

PORTABLE PHONE CHARGER

SUNGLASSES AND HAT

A CHANGE OF CLOTHES

\*NOTE THAT THE WWC DOES NOT PERMIT OUTSIDE FOOD, AND THEY RESERVE THE RIGHT TO REMOVE POP-UP TENTS FOR ANY REASON





# EVENT DETAILS

---

## DUCK ADOPTIONS, DUCK DEPOT, & FOOD



### DUCK ADOPTIONS - CREDIT ONLY

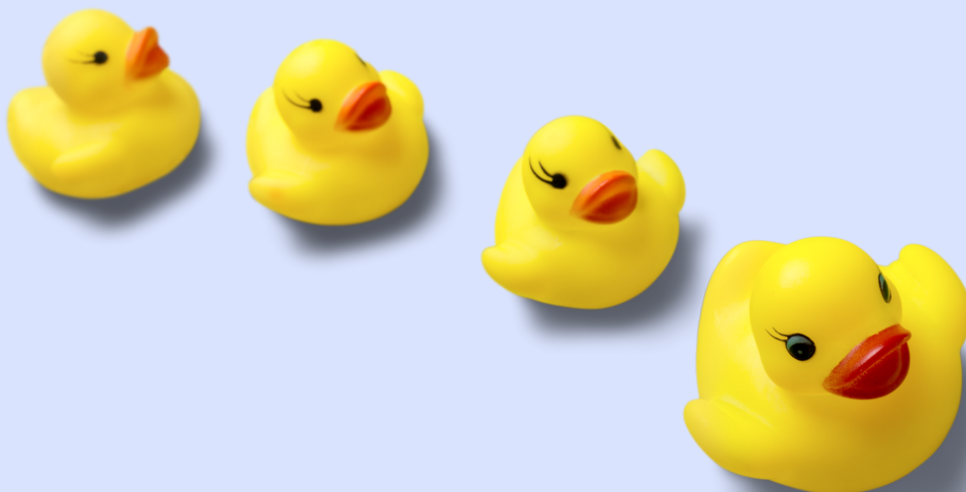
- DUCK ADOPTIONS WILL CONTINUE UNTIL 3 PM ON EVENT DAY. **DAY-OF DUCK ADOPTIONS WILL BE AVAILABLE THIS YEAR! DUCK ADOPTIONS ARE CREDIT ONLY.**

### DUCK DEPOT (SHIRTS AND OTHER ITEMS) - CREDIT ONLY

- OUR **DUCK DEPOT** WILL HAVE SHIRTS AND OTHER FUN SWAG ITEMS FOR SALE.
- **PLEASE NOTE THAT DUCK DEPOT AND DUCK SALES ARE CREDIT ONLY!**

### FOOD - CASH AND CREDIT

- **FOOD AND BEVERAGES ARE AVAILABLE FOR PURCHASE AT WWC VENUES W/ CASH OR CARD.**



# KinderMourn

## 19TH ANNUAL

hope floats venue map

